

SPORT-TEK

Sport-Tek® Ladies Sport-Wick® Stretch Contrast 1/2-Zip Pullover. LST854

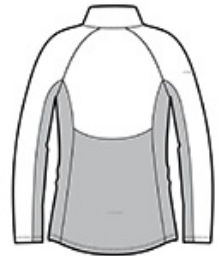
By mixing heather with a solid color and adding reflective hits, this moisture-wicking pullover has a technical look plus plenty of stretch for easy movement.

- 6.8-ounce, 90/10 poly/spandex jersey
- Soft-brushed backing
- Tag-free label
- Reflective details on right sleeve and lower back
- Feminine curved and blocked design details on back
- Cadet collar
- Reverse coil zipper
- Princess seams
- Raglan sleeves
- Open cuffs and hem
- Thumbholes to keep hands warm
- Drop tail hem

Due to the nature of 100% polyester performance fabrics, special care must be taken throughout the printing process.



front



back

HOW TO MEASURE





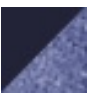


CHEST WIDTH

Measure under the arm and around the fullest part of the chest with arms down, keeping tape horizontal.

SIZE CHART

	XS	S	M	L	XL	XXL	3XL	4XL
Size	2	4/6	8/10	12/14	16/18	20/22	24/26	28
Bust	32-34	35-36	37-38	39-41	42-44	45-47	48-51	52-55

COLOR INFORMATION

				
Black/ Charcoal Grey Heather PMS 426 C	Pink Rush/ Pink Rush Heather PMS 7435 C	True Navy/ True Navy Heather PMS 533 C	True Royal/ True Royal Heather PMS 7687 C	White/ Charcoal Grey Heather